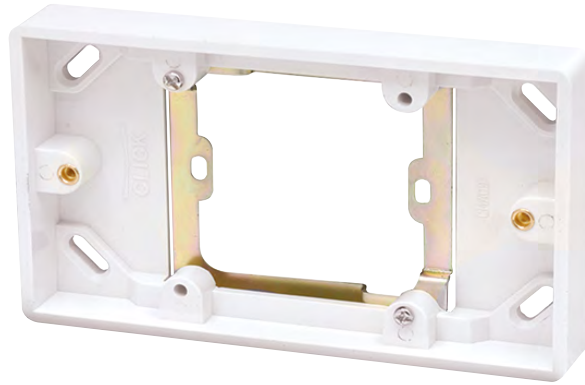


Product Code: CMA091

Luckinslive 389087113

Description: 1 Gang To 2 Gang 16mm Deep Converter Pattress



General Information

Plate Dimensions (mm)	147 (W) x 87 (H) x 20 (D)	
Style	Rounded Profile	
Colour	Polar White	
Materials	Pattress Box: Urea	Threaded Lug: Brass
Anti Microbial Certified	Yes	
Back Box Knockouts - Total (mm)	No Knockouts	
Back Box Earth Terminal Supplied	No	
Cable Restraint Supplied	No	
Operational Temperature (°C)	-5 to +40	
Warranty (Years)	25	

Standards BS 4662

Additional Information

For cleaning / polishing of products, use only a soft, dry, clean cloth.
 Ensure that the mains supply is isolated before commencing installation and refer to the circuit diagram with the relevant product.
 Bare earth cables must always be covered with appropriate sleeving and wired to the earth terminal.
 All white moulded accessories are manufactured using Urea Formaldehyde, which has similar inherent properties to antimicrobial additives that inhibit the growth of infectious diseases as well as anti-viral properties against enveloped and non-enveloped viruses.
 All products have been independently tested with 99.9% of enveloped viruses and 92% of non-enveloped viruses killed off whilst achieving a 99.9% kill rate across all four types of the strains of bacteria - MRSA, E-Coli, Salmonella, and Klebsiella Pneumoniae.



Catalogue



Range



DoC

