



Data Sheet

Product Code: JDNDP303S

This product can also be made using our Matrix System, using the products WDND3S + MJP120 x 3

Product Description: 3-Gang 2-Way Push-On/Off Rotary LED Dimmer 3 x 0-120W (1-10 LEDs) (Twin Plate)

Range: Screwless

Finish: Satin

Product Category: V-Pro Dimmer

Insert/Knob Colour: Satin Chrome Knobs

Barcode: 5021575341058

Dimensions: 86x147x48mm

Faceplate Depth: 4mm

Net Weight: 359g

Gross Weight: 362g

Fixing Centres: 120.6mm

Depth from Mounting Face: 23.6mm

Recommended Back Box Depth: 35mm

Operating Voltage: 230v 50Hz

Maximum Load Rating: LED; 120W (Max. 10 lamps)

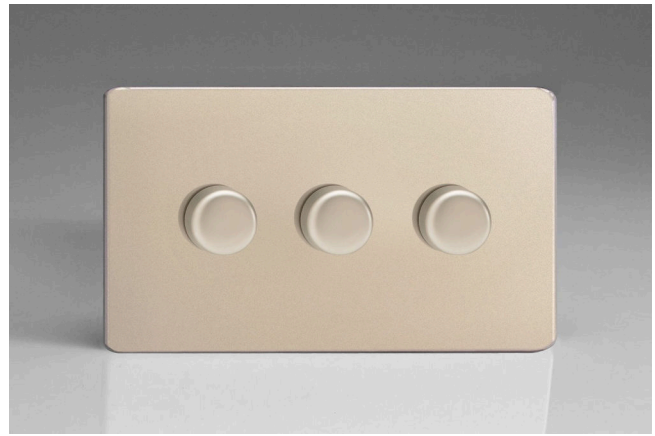
Maximum Current Rating: 1.1A

Terminal (Live) Diameter: 3.2mm; **Capacity:** 3 x 1.5mm²

Terminal (Earth) Diameter: 3.3mm; **Capacity:** 3 x 1.5mm²

Intended Applications: Indoor Use Only. Domestic lighting circuits including many dimmable LEDs.

Safety Advice: Not suitable for use with non-dimmable fluorescent bulbs and tubes, wire-wound or toroidal transformers, TRIAC dimmable loads or electric motors. Do not overload. Product Must Be



Product Features

- ✔ V-Pro intelligent dimming technology
- ✔ Soft start feature and intelligent overload protection
- ✔ Adjustable minimum brightness setting and choice of driving modes
- ✔ Sleek, low-profile screwless faceplate



10 YEAR GUARANTEE

BRITISH MADE



Earthed.

Applicable Safety Standard: BS EN 60669-2-1

Commodity Code: 85365005

Declaration of Conformity

All information is subject to change without notice. Errors and omissions excepted. Images are for illustrative purposes only. Individual features and colours may vary. Refer to date of issue to identify latest version.

Date of Issue: 06th February 2022 © Doyle & Tratt Products Ltd, Carylls Lea, Faygate, West Sussex, RH12 4SJ, United Kingdom. All rights reserved.