



Data Sheet

Product Code: JRP401

This product can also be made using our Matrix System, using the products WR1 + MJP120 x 1

Product Description: 1-Gang 2-Way Push-On/Off Rotary LED Dimmer 1 x 0-120W (1-10 LEDs)

Range: Classic

Finish: Pewter

Product Category: V-Pro Dimmer

Insert/Knob Colour: Chrome Knob

Barcode: 5021575551068

Dimensions: 91x91x47mm

Faceplate Depth: 8mm

Net Weight: 146g

Gross Weight: 148g

Fixing Centres: 60.3mm

Depth from Mounting Face: 18.1mm

Recommended Back Box Depth: 25mm

Operating Voltage: 230v 50Hz

Maximum Load Rating: LED; 120W (Max. 10 lamps)

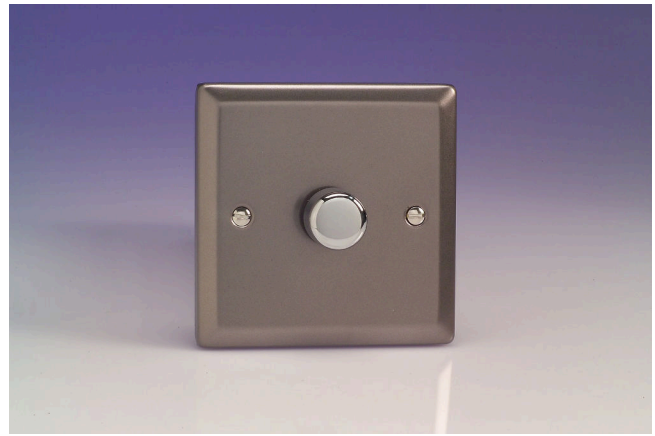
Maximum Current Rating: 1.3A

Terminal (Live) Diameter: 3.2mm; **Capacity:** 3 x 1.5mm²

Terminal (Earth) Diameter: 3.3mm; **Capacity:** 3 x 1.5mm²

Intended Applications: Indoor Use Only. Domestic lighting circuits including many dimmable LEDs.

Safety Advice: Not suitable for use with non-dimmable fluorescent bulbs and tubes, wire-wound or toroidal transformers, TRIAC dimmable loads or electric motors. Do not overload. Product Must Be Earthed.



Product Features

- ✔ V-Pro intelligent dimming technology
- ✔ Soft start feature and intelligent overload protection
- ✔ Adjustable minimum brightness setting and choice of driving modes
- ✔ Bevelled edge faceplate



10 YEAR GUARANTEE

BRITISH MADE



Applicable Safety Standard: BS EN 60669-2-1

Commodity Code: 85365005

Declaration of Conformity

All information is subject to change without notice. Errors and omissions excepted. Images are for illustrative purposes only. Individual features and colours may vary. Refer to date of issue to identify latest version.

Date of Issue: 06th February 2022 © Doyle & Tratt Products Ltd, Carylls Lea, Faygate, West Sussex, RH12 4SJ, United Kingdom. All rights reserved.