



# Data Sheet

Product Code: XDN1S

**Product Description:** 1-Gang 10A 1- or 2-Way Rocker Switch

**Range:** Screwless

**Finish:** Satin

**Product Category:** 2-Way Rocker Switch

**Insert/Knob Colour:** Chrome Rocker

**Barcode:** 5021575470239

**Dimensions:** 86x86x25mm

**Faceplate Depth:** 4mm

**Net Weight:** 116g

**Gross Weight:** 118g

**Fixing Centres:** 60.3mm

**Depth from Mounting Face:** 17.4mm

**Recommended Back Box Depth:** 25mm

**Operating Voltage:** 230v 50Hz

**Maximum Load Rating:** 10A

**Maximum Current Rating:** 10A

**Terminal (Live) Diameter:** 3.3mm; **Capacity:** 3 x 1.5mm<sup>2</sup>

**Terminal (Earth) Diameter:** 3.3mm; **Capacity:** 3 x 1.5mm<sup>2</sup>

**Intended Applications:** Indoor Use Only. Domestic lighting circuits.

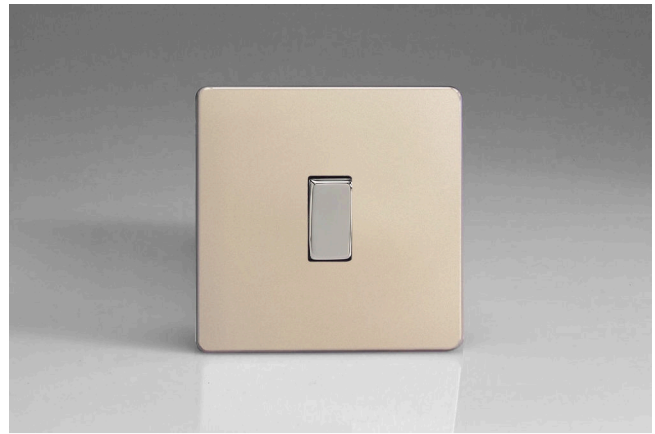
**Safety Advice:** Product Must Be Earthed.

**Applicable Safety Standard:** BS EN 60669-1

**Commodity Code:** 85365007

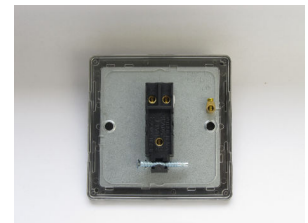
Declaration of Conformity

*All information is subject to change without notice. Errors and omissions excepted. Images are for illustrative purposes only. Individual features and colours may vary. Refer to date of issue to identify latest version.*



## Product Features

- ✔ 1- or 2-way switching
- ✔ Suitable for controlling both mains and low voltage lighting
- ✔ Sleek, low-profile screwless faceplate



10 YEAR GUARANTEE

BRITISH MADE 

