



Data Sheet

Product Code: XDN20DS

Product Description: 1-Gang 20A Double Pole Rocker Switch

Range: Screwless

Finish: Satin

Product Category: 20A Rocker Switch

Insert/Knob Colour: Chrome Rocker

Barcode: 5021575471885

Dimensions: 86x86x30mm

Faceplate Depth: 4mm

Net Weight: 136g

Gross Weight: 138g

Fixing Centres: 60.3mm

Depth from Mounting Face: 22.2mm

Recommended Back Box Depth: 25mm

Operating Voltage: 230v 50Hz

Maximum Load Rating: 20A

Maximum Current Rating: 20A

Terminal (Live) Diameter: 4.5mm; **Capacity:** 4 x 2.5mm²

Terminal (Neutral) Diameter: 4.5mm; **Capacity:** 4 x 2.5mm²

Terminal (Earth) Diameter: 3.3mm; **Capacity:** 4 x 2.5mm²

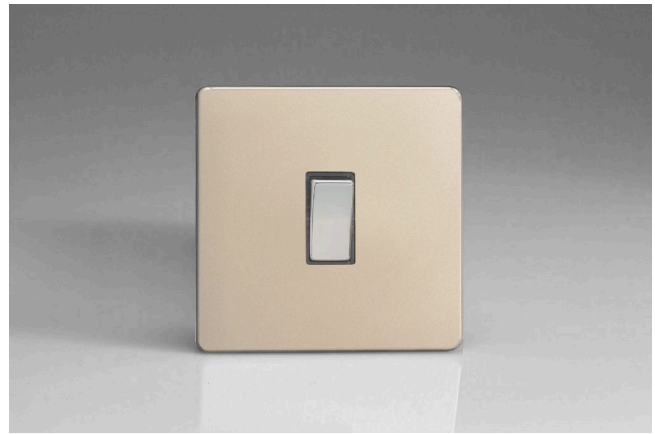
Intended Applications: Indoor Use Only. Domestic power supply.

Safety Advice: Product Must Be Earthed.

Applicable Safety Standard: BS EN 60669-1

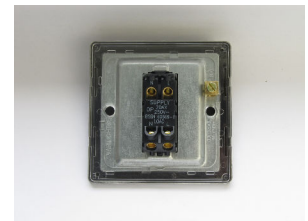
Commodity Code: 85389091

Declaration of Conformity



Product Features

- ✔ Double pole switching
- ✔ Sleek, low-profile screwless faceplate



10 YEAR GUARANTEE

BRITISH MADE



All information is subject to change without notice. Errors and omissions excepted. Images are for illustrative purposes only. Individual features and colours may vary. Refer to date of issue to identify latest version.

Date of Issue: 06th February 2022 © Doyle & Tratt Products Ltd, Carylls Lea, Faygate, West Sussex, RH12 4SJ, United Kingdom. All rights reserved.