



Data Sheet

Product Code: XDN6UDS

Product Description: 13A Unswitched Fused Spur with Metal Inserts

Range: Screwless

Finish: Satin

Product Category: Fused Spur

Insert/Knob Colour: Chrome Inserts

Barcode: 5021575471656

Dimensions: 86x86x30mm

Faceplate Depth: 4mm

Net Weight: 166g

Gross Weight: 168g

Fixing Centres: 60.3mm

Depth from Mounting Face: 22.7mm

Recommended Back Box Depth: 35mm

Operating Voltage: 230v 50Hz

Maximum Load Rating: Refer to Fuse Value

Maximum Current Rating: 13A

Terminal (Live) Diameter: 4.5mm; **Capacity:** 4 x 2.5mm²

Terminal (Earth) Diameter: 3.3mm; **Capacity:** 3 x 1.5mm²

Intended Applications: Indoor Use Only. Domestic power supply.

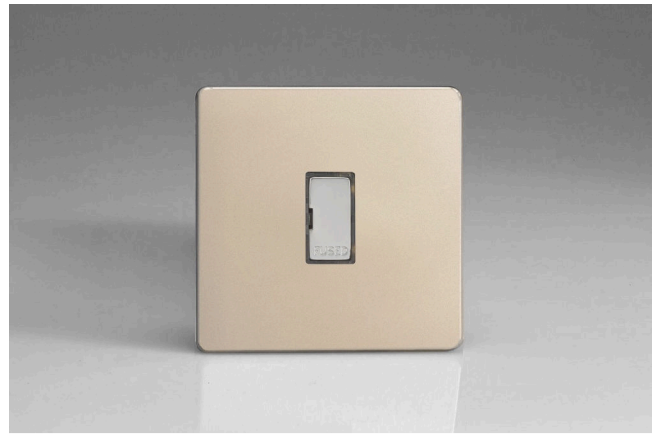
Safety Advice: Product Must Be Earthed.

Applicable Safety Standard: BS 1363-4

Commodity Code: 85389091

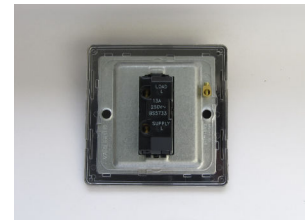
Declaration of Conformity

All information is subject to change without notice. Errors and omissions excepted. Images are for illustrative purposes only. Individual features and colours may vary. Refer to date of issue to identify latest version.



Product Features

- ☑ Holds standard 25.4x6.4mm fuse
- ☑ Replaceable 13A fuse included
- ☑ Sleek, low-profile screwless faceplate



10 YEAR GUARANTEE

BRITISH MADE



