



# Data Sheet

Product Code: XDVRP5ABS

---

**Product Description:** 1-Gang 5A Round Pin Socket

---

**Range:** Screwless

**Finish:** Polished Brass

**Product Category:** Round Pin Socket

**Insert/Knob Colour:** Black Insert

**Barcode:** 5021575491852

---

**Dimensions:** 86x86x25mm

**Faceplate Depth:** 4mm

**Net Weight:** 176g

**Gross Weight:** 178g

**Fixing Centres:** 60.3mm

**Depth from Mounting Face:** 18.4mm

**Recommended Back Box Depth:** 35mm

**Operating Voltage:** 230v 50Hz

**Maximum Load Rating:** 5A

**Maximum Current Rating:** 5A

**Terminal (Live) Diameter:** 3.7mm; **Capacity:** 3 x 1.5mm<sup>2</sup>

**Terminal (Neutral) Diameter:** 3.7mm; **Capacity:** 3 x 1.5mm<sup>2</sup>

**Terminal (Earth) Diameter:** 3.7mm; **Capacity:** 3 x 1.5mm<sup>2</sup>

---

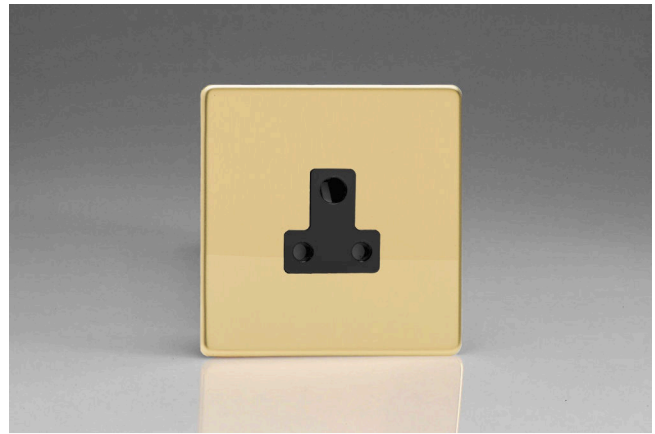
**Intended Applications:** Indoor Use Only. Domestic power supply.

**Safety Advice:** Product Must Be Earthed.

**Applicable Safety Standard:** BS 546

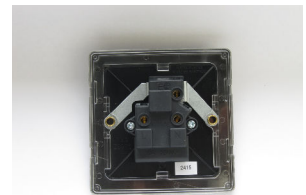
**Commodity Code:** 85366990

Declaration of Conformity



## Product Features

- ⊕ For use in lighting circuits up to 1150W in conjunction with wall switches
- ⊕ Sleek, low-profile screwless faceplate



10 YEAR GUARANTEE

BRITISH MADE



*All information is subject to change without notice. Errors and omissions excepted. Images are for illustrative purposes only. Individual features and colours may vary. Refer to date of issue to identify latest version.*

*Date of Issue: 06th February 2022 © Doyle & Tratt Products Ltd, Carylls Lea, Faygate, West Sussex, RH12 4SJ, United Kingdom. All rights reserved.*