



Data Sheet

Product Code: XFI1D

Product Description: 1-Gang 10A 1- or 2-Way Rocker Switch

Range: Ultraflat

Finish: Iridium

Product Category: 2-Way Rocker Switch

Insert/Knob Colour: Iridium Rocker

Barcode: 5021575280470

Dimensions: 89x89x25mm

Faceplate Depth: 1mm

Net Weight: 106g

Gross Weight: 108g

Fixing Centres: 60.3mm

Depth from Mounting Face: 19mm

Recommended Back Box Depth: 25mm

Operating Voltage: 230v 50Hz

Maximum Load Rating: 10A

Maximum Current Rating: 10A

Terminal (Live) Diameter: 3.3mm; **Capacity:** 3 x 1.5mm²

Terminal (Earth) Diameter: 3.3mm; **Capacity:** 3 x 1.5mm²

Intended Applications: Indoor Use Only. Domestic lighting circuits.

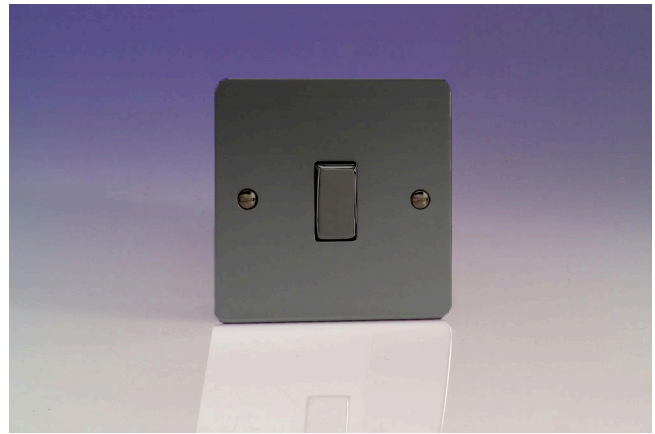
Safety Advice: Product Must Be Earthed.

Applicable Safety Standard: BS EN 60669-1

Commodity Code: 85365007

Declaration of Conformity

All information is subject to change without notice. Errors and omissions excepted. Images are for illustrative purposes only. Individual features and colours may vary. Refer to date of issue to identify latest version.



Product Features

- ☑ 1- or 2-way switching
- ☑ Suitable for controlling both mains and low voltage lighting
- ☑ Contemporary, ultra-slim faceplate



10 YEAR GUARANTEE

BRITISH MADE



