



Data Sheet

Product Code: XFSRP2AB

This product Is Made to Order

Product Description: 1-Gang 2A Round Pin Socket

Range: Ultraflat

Finish: Brushed Steel

Product Category: Round Pin Socket

Insert/Knob Colour: Black Insert

Barcode: 5021575710908

Dimensions: 89x89x25mm

Faceplate Depth: 1mm

Net Weight: 136g

Gross Weight: 138g

Fixing Centres: 60.3mm

Depth from Mounting Face: 23mm

Recommended Back Box Depth: 35mm

Operating Voltage: 230v 50Hz

Maximum Load Rating: 2A

Maximum Current Rating: 2A

Terminal (Live) Diameter: 3.3mm; **Capacity:** 3 x 1.5mm²

Terminal (Neutral) Diameter: 3.3mm; **Capacity:** 3 x 1.5mm²

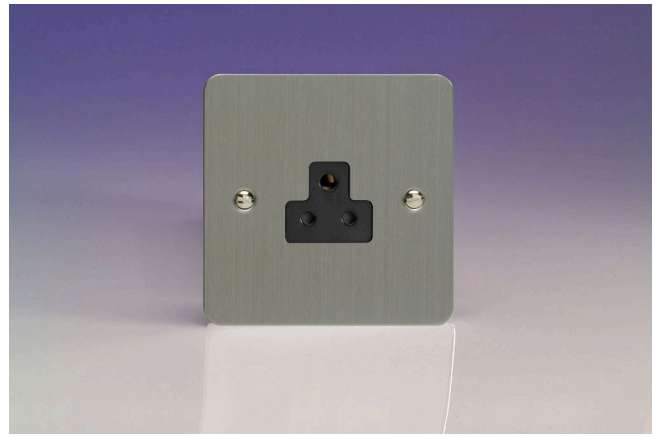
Terminal (Earth) Diameter: 3.3mm; **Capacity:** 3 x 1.5mm²

Intended Applications: Indoor Use Only. Domestic power supply.

Safety Advice: Product Must Be Earthed.

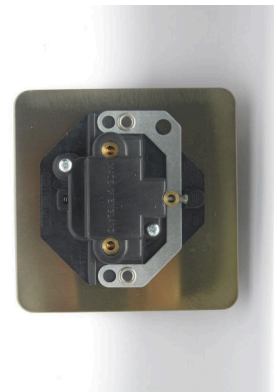
Applicable Safety Standard: BS 546

Commodity Code: 85366990



Product Features

- ✔ For use in lighting circuits up to 460W in conjunction with wall switches
- ✔ Contemporary, ultra-slim faceplate



10 YEAR GUARANTEE

BRITISH MADE



Declaration of Conformity

All information is subject to change without notice. Errors and omissions excepted. Images are for illustrative purposes only. Individual features and colours may vary. Refer to date of issue to identify latest version.

Date of Issue: 06th February 2022 © Doyle & Tratt Products Ltd, Carylls Lea, Faygate, West Sussex, RH12 4SJ, United Kingdom. All rights reserved.