



Data Sheet

Product Code: XFVBPB

Product Description: 1-Gang 10A Retractive Switch

Range: Ultraflat

Finish: Polished Brass

Product Category: Retractive Switch

Insert/Knob Colour: Black Rocker

Barcode: 5021575780673

Dimensions: 89x89x25mm

Faceplate Depth: 1mm

Net Weight: 96g

Gross Weight: 98g

Fixing Centres: 60.3mm

Depth from Mounting Face: 20mm

Recommended Back Box Depth: 25mm

Operating Voltage: 230v 50Hz

Maximum Load Rating: 10A

Maximum Current Rating: 10A

Terminal (Live) Diameter: 3.3mm; **Capacity:** 3 x 1.5mm²

Terminal (Earth) Diameter: 3.3mm; **Capacity:** 3 x 1.5mm²

Intended Applications: Indoor Use Only. Domestic power supply.

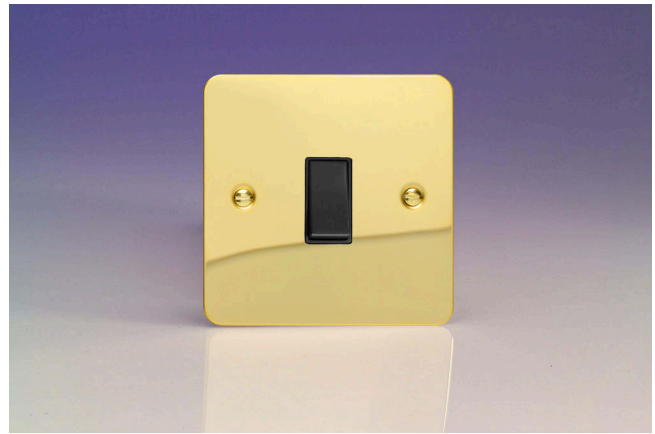
Safety Advice: Product Must Be Earthed.

Applicable Safety Standard: BS EN 60669-1

Commodity Code: 85365011

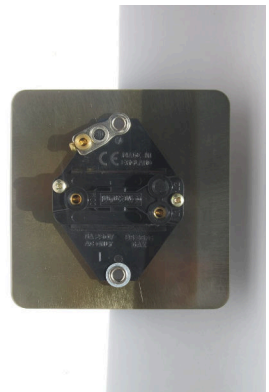
Declaration of Conformity

All information is subject to change without notice. Errors and omissions excepted. Images are for illustrative purposes only. Individual features and colours may vary. Refer to date of issue to identify latest version.



Product Features

- ☑ Retractive, push to make switch
- ☑ For use with blinds, bells and applications where a momentary electric signal is required
- ☑ Contemporary, ultra-slim faceplate



10 YEAR GUARANTEE

BRITISH MADE 

