



Data Sheet

Product Code: XYPGY3.CW



Product Description: 3-Gang PowerGrid Plate including Yoke (Twin Plate)

10 YEAR GUARANTEE

BRITISH MADE 

Range: Urban

Finish: Chalk White

Product Category: Grid Faceplates

Insert/Knob Colour:

Barcode: 5021575188769

Product Features

- ☑ Create your own switch combinations
- ☑ Bevelled edge faceplate
- ☑ Comes in a pack with the grid frame pictured below.

Dimensions: 91x150x*mm

Faceplate Depth: 8mm

Net Weight: 209g

Gross Weight: 212g

Fixing Centres: 120.6mm

Depth from Mounting Face: Module Dependent

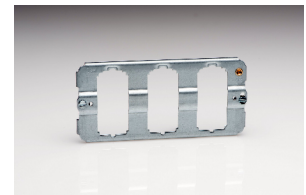
Recommended Back Box Depth: N/A

Operating Voltage: 230v 50Hz

Maximum Load Rating: N/A

Maximum Current Rating: -

Terminal (Earth) Diameter: 3.3mm; **Capacity:** 3 x 1.5mm²



Intended Applications: Indoor Use Only. Domestic lighting circuits.

Safety Advice: Product Must Be Earthed (via PowerGrid Frame).

Applicable Safety Standard: N/A

Commodity Code: 85389091

Declaration of Conformity

All information is subject to change without notice. Errors and omissions excepted. Images are for illustrative purposes only. Individual features and colours may vary. Refer to date of issue to identify latest version.

