



Installation Instructions  
**REC2SPD**  
 100 A REC with SPD  
 THIS IS A CLASS 1 ENCLOSURE



**IMPORTANT INFORMATION**

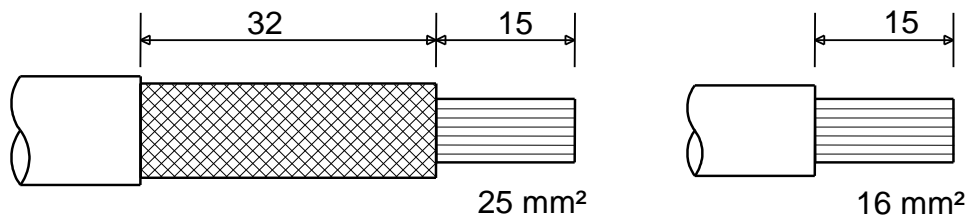
*This unit should be installed by a qualified competent person in accordance with all relevant legislation and regulations including building regulations and wiring regulations BS 7671. If in doubt contact a qualified competent person.*

- Turn off all power supplying this equipment before working on or inside the equipment.
- Always use a properly rated volt-sensing device to confirm the power is off.
- Replace all devices, doors and covers before turning on the power to this equipment.
- To avoid ingress of swarf and similar material, always remove gland plates to allow cutting/slotting for cable entries.

**Failure to follow these instructions could result in serious injury or death.**

**DO NOT USE POWER TOOL SCREWDRIVERS ON ELECTRICAL CONNECTIONS**

**1 CABLE STRIPPING DETAILS**



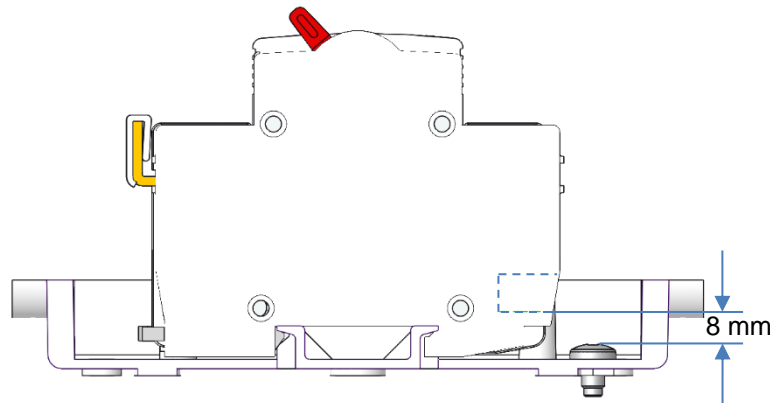
**2 ENSURE THE TIGHTNESS OF ALL SCREW CONNECTIONS**

Device		Max cable Capacity	Recommended Tightening Torque
Main Switch		50 mm <sup>2</sup>	2.3 Nm
SPD	Live Terminal	2.5 mm <sup>2</sup> - 25 mm <sup>2</sup>	2 Nm
	Neutral / Earth Terminal	2.5 mm <sup>2</sup> - 10 mm <sup>2</sup>	1.2 Nm

Use No. 2 Pozzi-drive bit DO NOT connect using power driven screwdrivers

**3 FIXING SCREW – TERMINAL CAGE CLEARANCE**

When installing this unit ensure there is a minimum 8 mm clearance between the head of the screw fixing the unit in its mounting position and the terminal cage. (see fig below)

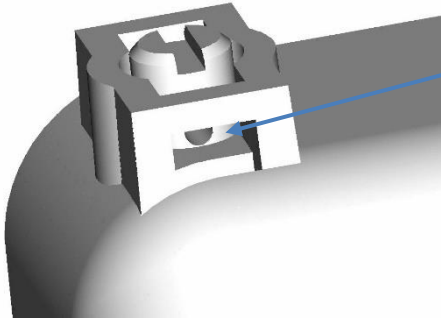




# Installation Instructions REC2SPD 100 A REC with SPD THIS IS A CLASS 1 ENCLOSURE

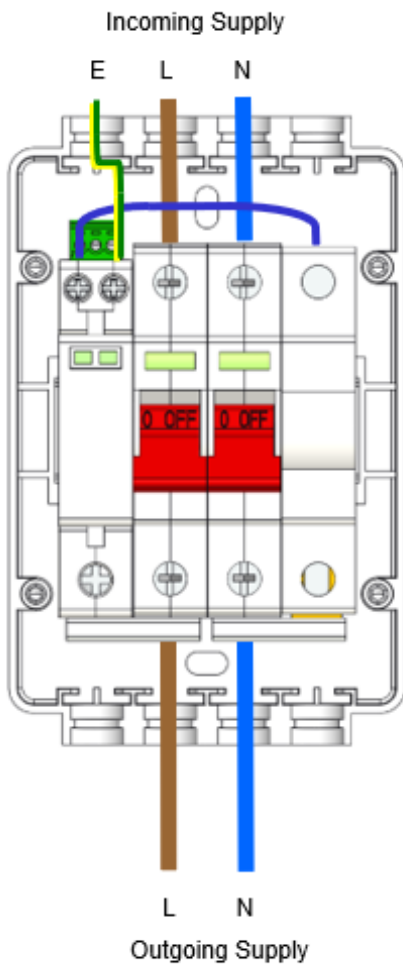


## 4 TO PREVENT REMOVAL OF FRONT COVER

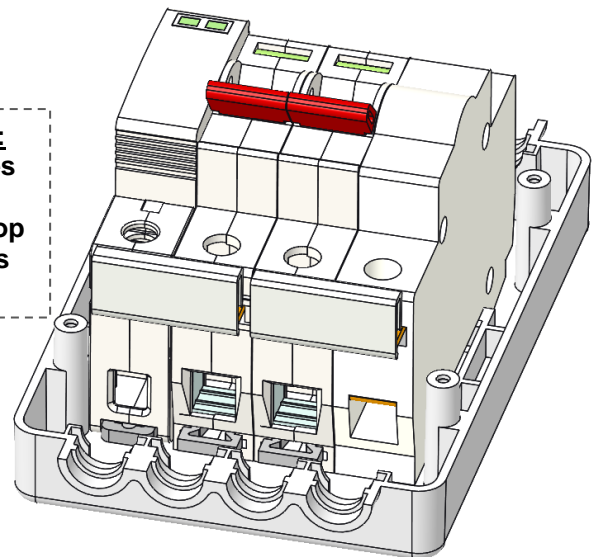


Insert wire or plastic seal through tamper-proof screw.

## 5 CIRCUIT DIAGRAM



**Important Note:**  
Incoming cables must only be fitted into the top of the Switch as shown.



**Earth terminal Blank:**  
Terminal Blank with 5mm Ø hole, specifically designed for the earth cable from the SPD device.

